



“Viento impresses with its spaciousness and comfortable layout. How have we made 138 square meters feel like almost a double space? The house creates a sense two large buildings united in one space. This allows you to use each room as efficiently as possible – both for everyday need, leisure or work. The accent that gives Viento a special coziness is a large courtyard, which is an outstanding benefit whether the house is situated on big or smaller plot of land.”

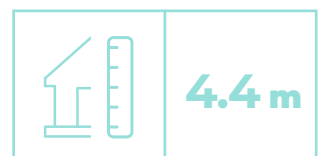
Architect Renārs Putniņš

VIENTO



The easy-to-modify Viento housing plan offers three significant advantages. First, it separates the living area from the lounges, making it possible to adapt the space to the needs of a home office. Secondly, a large courtyard gives each property a special, unique individuality becoming a special to spend time with a family or friends. Third, the design can be easily modified (for example, in the form of the letters L, H or T) to adapt to plots of different sizes and configurations, or maximal use natural light.

Four bedrooms, three bathrooms and a spacious living room will ensure a comfortable and convenient daily life, as well as allow to receive guests. All Sila Stils projects, including Viento, come fully finished and have equipped bathrooms. Your home is ready for cozy living right from the first step inside!



LIVING SPACE:

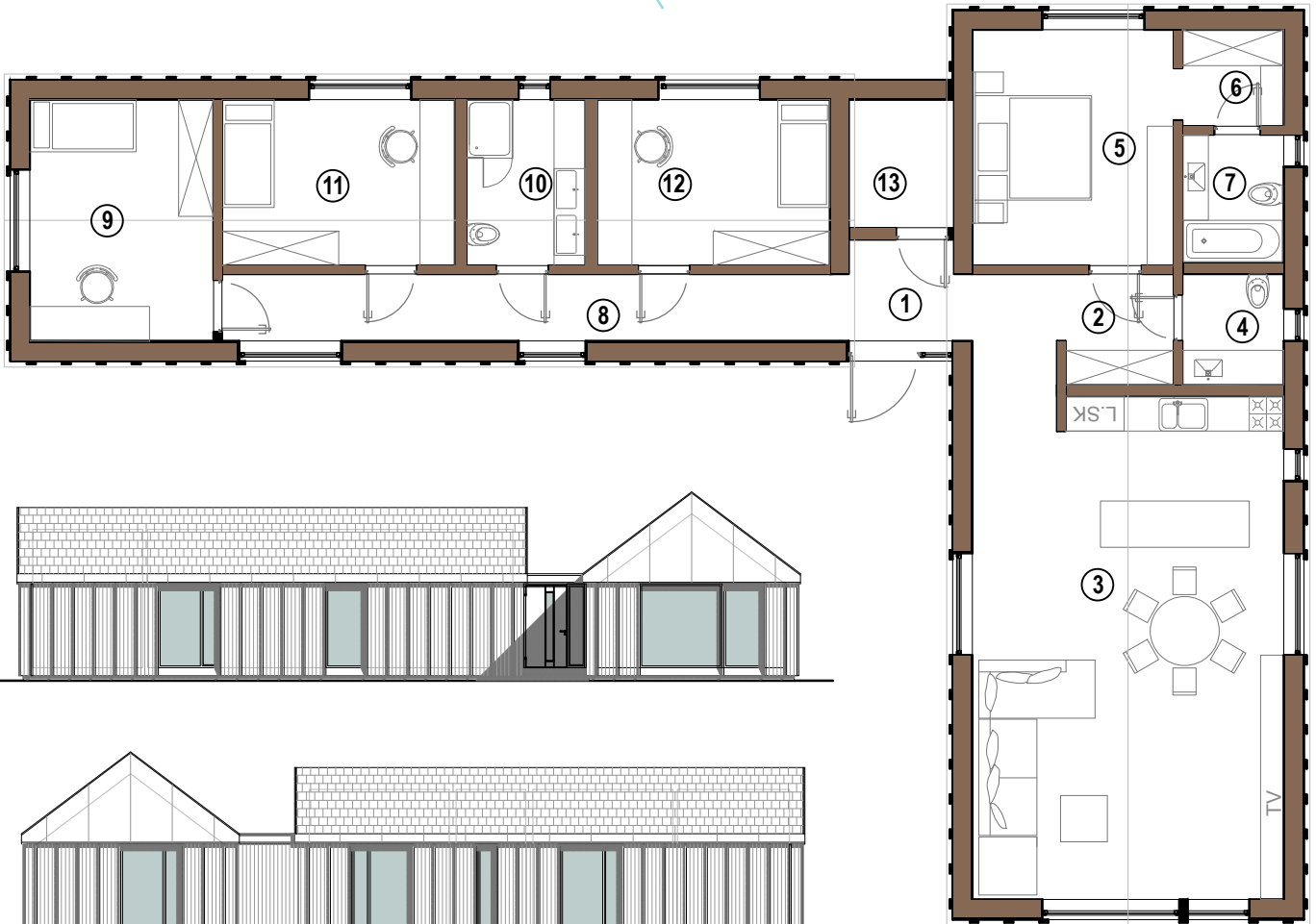
M²

138.42

You can choose a modern house with 2 finish options:

- wind and rain proof house
- completely finished house (turn-key)

**Get in touch with us
to find out more**



1	ENTRANCE AREA	3.15 m ²
2	HALL	6.59 m ²
3	LIVING ROOM / KITCHEN	46.31 m ²
4	WC	3.34 m ²
5	MASTER BEDROOM 1	14.02 m ²
6	WALK-IN CLOSET	2.9 m ²
7	ENSUITE BATHROOM	3.87 m ²
8	HALLWAY	12.41 m ²
9	BEDROOM 1	13.1 m ²
10	WC	5.86 m ²
11	BEDROOM 2	11.44 m ²
12	BEDROOM 3	11.44 m ²
13	TECHNICAL ROOM	3.99 m ²
TOTAL LIVING AREA		138.42 m ²