



# OTIUM



Project OTIUM is a perfect house for a 2-4 person family. It's compact, but spacious, with high ceiling living area and extensive glazing, which means - more light and sense of freedom.

Contemporary design means that the house is not only attractive and has a well thought out floor plan with a separate master suite, but also that it is built with longevity in mind and using energy effective constructions and timber from sustainable forests.

	<b>3</b>		<b>2</b>		<b>A+</b>		<b>3.7m</b>
---	----------	---	----------	---	-----------	---	-------------

LIVING AREA, M<sup>2</sup>

**109.34**

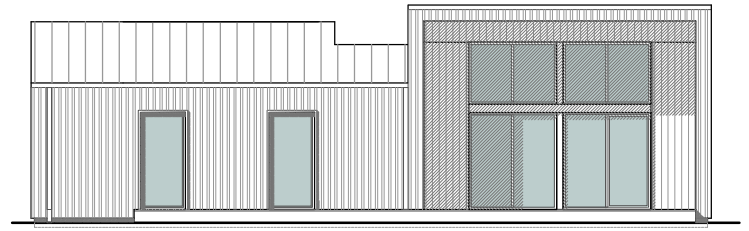
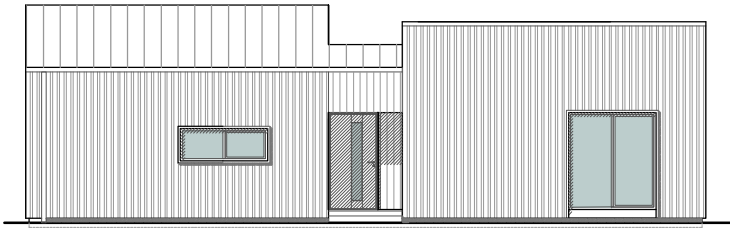
BUILD UP AREA, M<sup>2</sup>

**162.98**

YOU CAN CHOOSE A MODERN HOUSE WITH 2 FINISH OPTIONS:

- SHELL HOME
- COMPLETE HOME

# OTIUM



1 LIVING ROOM / KITCHEN 42.11 m<sup>2</sup>

2 MASTER BEDROOM 14.13 m<sup>2</sup>

3 BEDROOM 1 13.32 m<sup>2</sup>

4 BEDROOM 2 13.31 m<sup>2</sup>

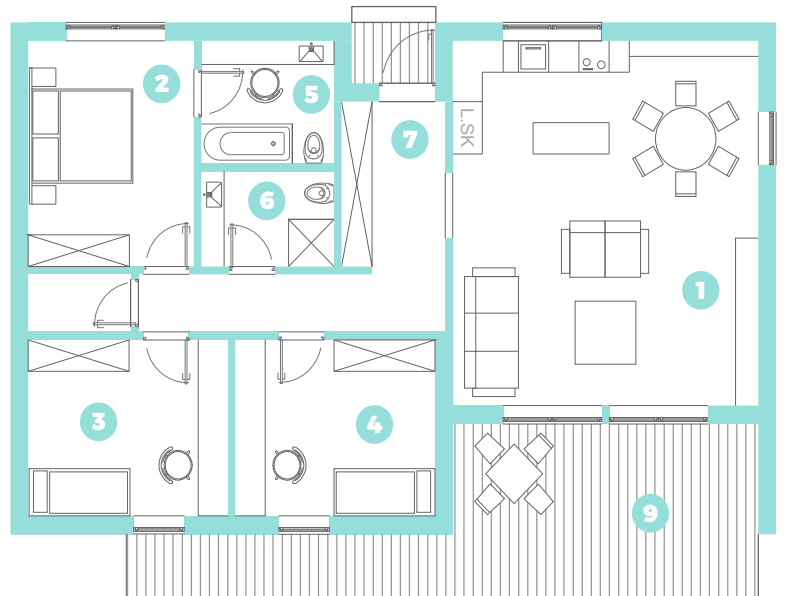
5 ENSUITE 6.13 m<sup>2</sup>

6 BATHROOM 4.77 m<sup>2</sup>

7 ENTRANCE / HALL 13.34 m<sup>2</sup>

8 TECHNICAL ROOM 2.23 m<sup>2</sup>

9 TERRACES 27.72 m<sup>2</sup>



INITIAL MEETING



DESIGNING



CONTRACT



CONSTRUCTION



MONTAGE



ENJOY YOUR HOME

**5 MONTHS**

**4-6 MONTHS**

## CONTACTS:

📍 23a Dunes Street (office)  
📞 +371 200 22 111  
✉ raksti@silastils.lv  
🏠 www.silastils.lv

📘 <https://www.facebook.com/silastilslv/>