



# SIDUS

Project SIDUS is a modern interpretation of a traditional architecture form. The contemporary look and feel are achieved by using a minimalist design and sophisticated finish. Living room's cathedral ceiling means not only more light, but also – endless design possibilities.

This spacious house provides sustainable and comfortable living for up to 6 persons with a luxury of a separate master suite.

	<b>4</b>		<b>3</b>		<b>A+</b>		<b>6.5m</b>
---	----------	---	----------	---	-----------	---	-------------

LIVING AREA, M<sup>2</sup>

**136.8**

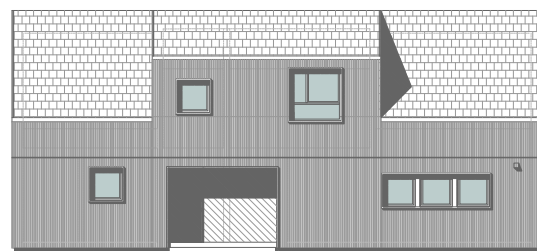
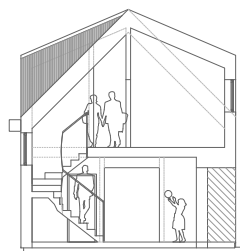
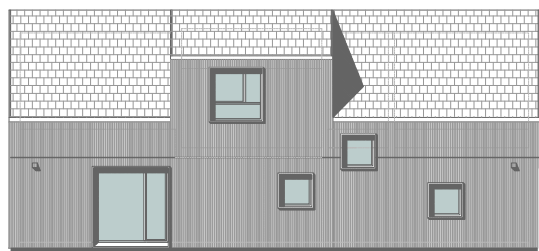
BUILD UP AREA, M<sup>2</sup>

**109.2**

YOU CAN CHOOSE A MODERN HOUSE WITH 2 FINISH OPTIONS:

- SHELL HOME
- COMPLETE HOME

# SIDUS



1 LIVING ROOM / KITCHEN 44.92 m<sup>2</sup>

2 MASTER BEDROOM 16.35 m<sup>2</sup>

3 BEDROOM 1 16.18 m<sup>2</sup>

4 BEDROOM 2 12.61 m<sup>2</sup>

5 BEDROOM 3 11.19 m<sup>2</sup>

6 ENSUITE 4.31 m<sup>2</sup>

7 BATHROOM 5.43 m<sup>2</sup>

8 WC 1.79 m<sup>2</sup>

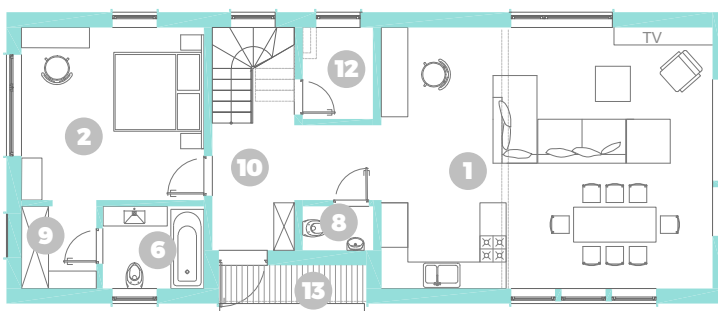
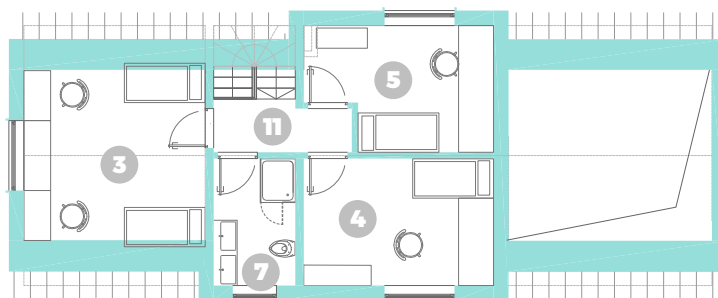
9 WARDROBE 3.19 m<sup>2</sup>

10 ENTR. HALL / STAIRCASE 13.96 m<sup>2</sup>

11 HALL 3.57 m<sup>2</sup>

12 TECHNICAL ROOM 3.35 m<sup>2</sup>

13 FRONT PORCH 2.93 m<sup>2</sup>



INITIAL MEETING



DESIGNING



CONTRACT



CONSTRUCTION



MONTAGE



ENJOY YOUR HOME

**5 MONTHS**

**4-6 MONTHS**

## CONTACTS:

📍 23a Dunes Street (office)  
 📞 +371 200 22 111  
 ✉️ raksti@silastils.lv  
 🏠 www.silastils.lv

🌐 <https://www.facebook.com/silastilslv/>