



# CAUDA



The CAUDA prefabricated and modular house has a functionally sound, compact layout - with four bedrooms and two bathrooms. The house is given special aesthetics by its facade and elements, for example, bay windows, which are more often used in exclusive and custom-built houses.

This ready-made project is meant for owners who think long-term and want a house that can be wisely and economically used in various life situations and for many generations.



LIVING AREA, M<sup>2</sup>

**101.01**

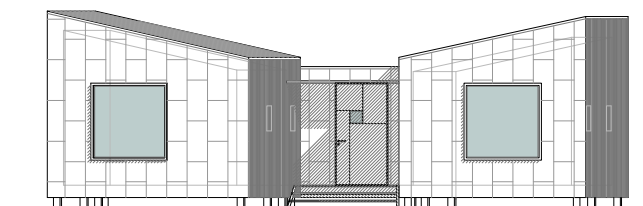
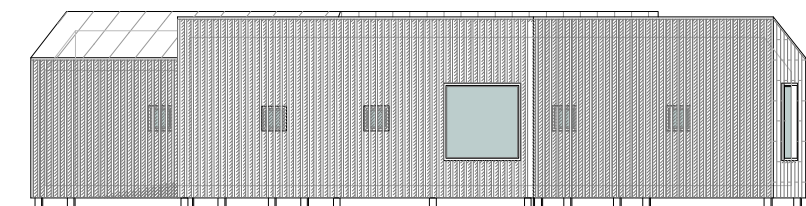
BUILD UP AREA, M<sup>2</sup>

**148.81**

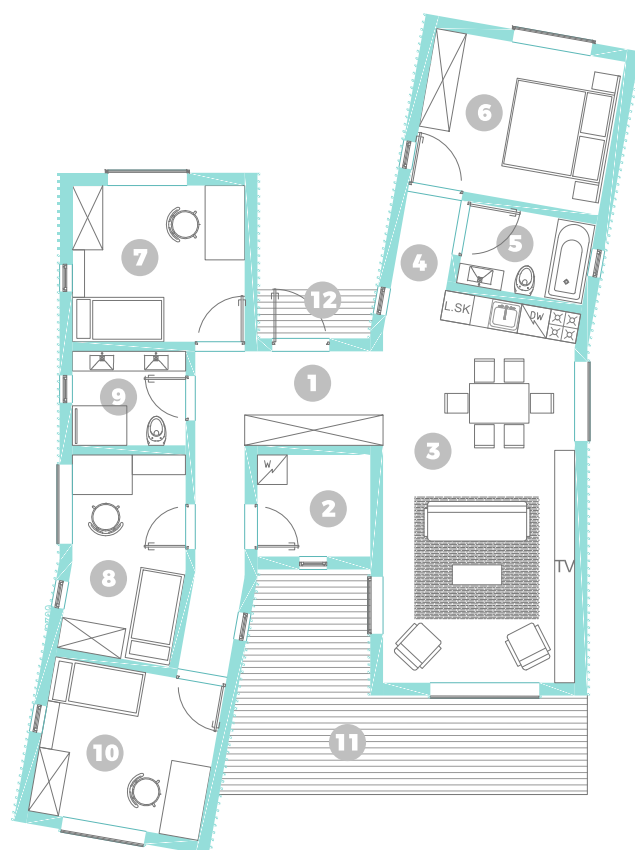
**YOU CAN CHOOSE A MODERN HOUSE WITH 2 FINISH OPTIONS:**

- SHELL HOME
- COMPLETE HOME

# CAUDA



1	ENTRANCE AREA	11.86 m <sup>2</sup>
2	TECHNICAL ROOM	4.69 m <sup>2</sup>
3	KITCHEN, LIVING ROOM	30.20 m <sup>2</sup>
4	HALL	2.03 m <sup>2</sup>
5	MASTER BATHROOM	4.26 m <sup>2</sup>
6	MASTER BEDROOM	12.19 m <sup>2</sup>
7	BEDROOM 1	11.00 m <sup>2</sup>
8	BEDROOM 2	9.44 m <sup>2</sup>
9	BATHROOM	4.35 m <sup>2</sup>
10	BEDROOM 3	11.00 m <sup>2</sup>
11	TERRACE	20.85 m <sup>2</sup>
12	ENTRANCE PORCH	3.83 m <sup>2</sup>



INITIAL MEETING



DESIGNING



CONTRACT



CONSTRUCTION



MONTAGE



ENJOY YOUR HOME

**5 MONTHS**

**4-6 MONTHS**

## CONTACTS:

📍 23a Dantes Street (office)  
📞 +371 200 22 111  
✉ raksti@silastils.lv  
🏠 www.silastils.lv

🌐 <https://www.facebook.com/silastilslv/>